



GAT MONTHLY MEMBERSHIP PROGRESS REPORT

Results as of: 5/31/2026

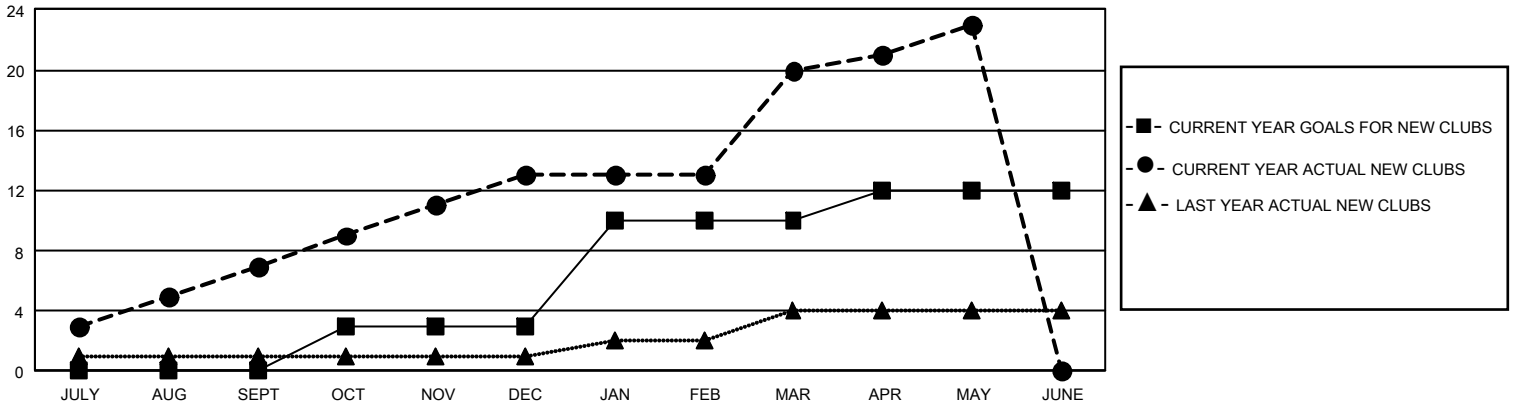
GMT Constitutional Area 5 - J, Group H

REPORT DOES NOT INCLUDE CLUBS IN UNDISTRICTED AREAS.

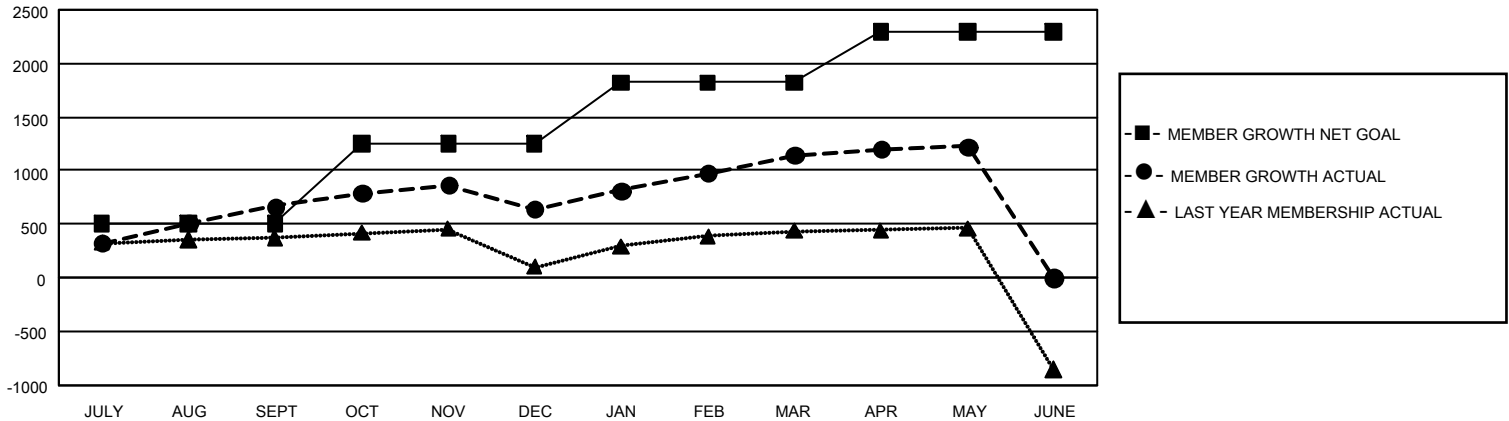
Clubs			
RESULTS FOR 2025-2026			
QUARTER	NEW CLUB GOAL	NEW CLUBS	DROPPED CLUBS
JULY/AUG/SEPT	0	7	0
OCT/NOV/DEC	9	6	1
JAN/FEB/MAR	21	7	1
APR/MAY/JUNE	6	3	1

Members			
RESULTS FOR 2025-2026			
QUARTER	MEMBER GROWTH NET GOAL	MEMBER GROWTH ACTUAL	DROPPED MEMBERS ACTUAL (including transfers)
JULY/AUG/SEPT	507	1,180	443
OCT/NOV/DEC	745	594	592
JAN/FEB/MAR	570	897	358
APR/MAY/JUNE	473	380	277

GOALS AND ACTUAL NEW CLUBS CUMULATIVE



GOALS AND ACTUAL MEMBERS CUMULATIVE



DROPPED CLUBS: 3	558 CLUBS OF 741 ADDED 1 OR MORE NEW MEMBERS	GENDER DISTRIBUTION	
		MALE 22,997 (75.46%) FEMALE 7,463 (24.49%) NON BINARY 0 (0.00%) PREFER NOT TO ANSWER 16 (0.05%)	
DROPPED MEMBERS		CLICK HERE FOR CUMULATIVE MEMBERSHIP DATA	
DECEASED 195 CLUB CANCELLED 0 OTHER 1,473 TOTAL 1,668	TOTAL FAMILY UNIT MEMBERS 9,597 FAMILY MEMBERS PAYING HALF DUES 5,303		